

# SKF Power Transmission Belts from the brand you trust

SKF supplies a full range of V-belts and timing belts for use in all industries. The manufacture of the belt products is in strictly controlled environment with modern mixing and curing facilities. The testing of the belts is done on ISO tested machinery to conform to the RMA and ISO standards for length and batch tolerance, with V-belts also conforming to antistatic standards for ISO 1813. The materials for the belts are also heat resistant, with an operating range of  $-30$  to  $70$  °C.

## Product features

- Oil and heat resistance/anti-static properties meet and exceed industry standards
- Globally sourced rubber along with stringently controlled tension members provide the superior performance expected from SKF
- Pre-stretched cords mean minimal elongation when fitted and running for the majority of the belt life
- State-of-the-art electronic rubber blending/mixing processes maintain the superior quality
- Tight tolerance stability during the manufacturing process along with superior raw material eliminates the requirement to match individual belts to a single drive

## User benefits

- Enhance worker safety
- Improve hygiene
- Improve product quality
- Improve reliability



- Increase production
- Increase shelf life
- Innovate the portfolio
- Produce safe products
- Reduce downtime
- Reduce energy consumption
- Reduce maintenance costs
- Reduce need for maintenance
- Reduce operating costs
- Reduce waste
- Shorten delivery times

## Common applications

- Compressors
- Conveyors
- Crushers
- Dryers
- Fans
- Flotation cells
- Horizontal mills
- Mixers
- Pumps
- Screens

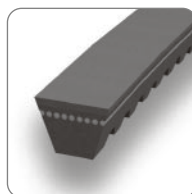


### Wrapped classical V belts



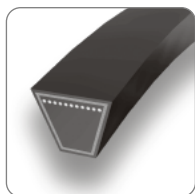
	Width (mm)	Height (mm)	Inside length (inches)
Z	10	6	15-79
A	13	8	16-187
B	17	11	23-315
C	22	14	42-418
D	32	20	98-477
E	38	23	90-658

### Cogged raw edge classical V belts



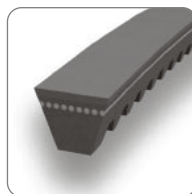
	Width (mm)	Height (mm)	Inside length (inches)
ZX	10	6	16-78
AX	13	8	21-132
BX	17	11	23-132
CX	22	14	39-132

### Wrapped wedge V belts



	Width (mm)	Height (mm)	Pitch length (mm)
SPZ	9.7	8	512-3550
SPA	12.7	10	732-4500
SPB	16.3	13	1250-8000
SPC	22	18	1700-12500

### Cogged raw edge wedge V belts



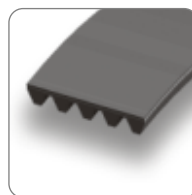
	Width (mm)	Height (mm)	Pitch length (mm)
XPZ	9.7	8	630-3550
XPA	12.7	10	757-3550
XPB	16.3	13	1250-3550
XPC	22	18	2000-3550

### Banded V belts (wedge, classical, narrow V)\*



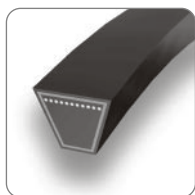
	Width (mm)	Height (mm)	Length (inches)
3V	9.0	9.9	50-140
5V	15.0	15.1	56-335
8V	25.0	25.5	100-475
A	13.0	9.9	47-187
B	17.0	13.0	47-220
C	22.0	16.2	90-248

### Ribbed V belts



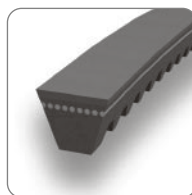
	Height (mm)	Pitch (mm)	Effective length (mm)
PJ	3.50	2.34	540-2480
PK	5.50	3.56	540-2420
PL	7.0	4.7	1075-4051
PM	13.0	9.4	2693-8408

### Wrapped narrow wedge V belts



	Width (mm)	Height (mm)	Outside length (inches)
3VX	9	8	25-140
5VX	15	13	53-355
8VX	25	23	100-500

### Cogged raw edge narrow wedge V belts



	Width (mm)	Height (mm)	Outside length (inches)
3VX	9	8	25-150
5VX	15	13	50-200

In all types of V belts non-standard lengths are also available.

\* Banded V belts are also available in SPB, SPC types.

# SKF Power Transmission Chains

## from the brand you trust

SKF Chains are manufactured in state-of-the-art facilities. Tight quality controls are employed to assure product conformance to the ISO standards and the existing industrial standards mainly ANSI, BS, DIN and JIS. SKF Oil field chains are American Petroleum Institute (API) approved and each box carries the API monogram. SKF automotive chain meets the ISO/TS16949 Quality Assurance System technical specification. This specification aligns American (QS-9000), German (VDA6.1), French (EAQF) and the Italian (AVSQ) automotive quality system standards within the global automotive industry.

All SKF Chains have a normal operating temperature range of  $-20$  to  $150$  °C. An exception is stainless steel chains with a range of  $-20$  to  $400$  °C. For higher temperatures alternative lubrication should be applied. Please, also note that for temperatures over  $200$  °C and below  $-20$  °C breaking load values are reduced.

### Product features

- From the raw material to the finished product, SKF's chains are superior by design: 100 % pre-stressing, 100 % pre-loading and running prior to packaging
- SKF uses a heavy pre-lubrication process to enable optimum storage life; most of SKF Chains are fully wrapped in plastic prior to being boxed
- A very large range of plating is available: Dacromet, nickel, zinc and stainless steel
- SKF also supplies a full range of conveyor chains for every application

### User benefits

- Enhance worker safety
- Improve hygiene
- Improve product quality
- Improve reliability
- Increase production
- Increase shelf life
- Innovate the portfolio
- Produce safe products
- Reduce downtime
- Reduce energy consumption
- Reduce maintenance costs
- Reduce need for maintenance
- Reduce operating costs
- Reduce waste
- Shorten delivery times

### Common applications

- Continuous casting
- Conveyors
- Drills
- Elevators
- Fillers
- Plate mills
- Reheat furnaces
- Rolling mills
- Shrink packers
- Thickeners

### Roller chains - Standard

- 100 % pre-stressed, 100 % pre-loaded and run prior to packaging
- Forego heavy pre-lubrication process for optimum storage life
- Fully wrapped in plastic prior to being boxed

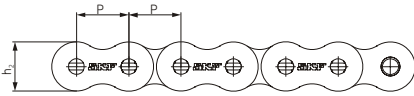
### SKF Xtra Strength Chains

- Suitable for applications with higher shock loads and lower operating speeds
- 100 % pre-stressed, 100 % pre-loaded and run prior to packaging
- Forego heavy pre-lubrication process for optimum storage life
- Fully wrapped in plastic prior to being boxed



## Roller chains

BS/ISO



BS/ISO Chain No.	Pitch P mm	Roller diameter d <sub>1</sub> max mm	Designation
04B-1	6.00	4.00	PHC 04B-1...
05B-1	8.00	5.00	PHC 05B-1...
06B-1 <sup>^</sup>	9.53	6.35	PHC 06B-1...
08B-1	12.70	8.51	PHC 08B-1...
10B-1	15.88	10.16	PHC 10B-1...
12B-1	19.05	12.07	PHC 12B-1...
16B-1	25.40	15.88	PHC 16B-1...
20B-1	31.75	19.05	PHC 20B-1...
24B-1	38.10	25.40	PHC 24B-1...
28B-1	44.45	27.94	PHC 28B-1...
32B-1	50.80	29.21	PHC 32B-1...
40B-1	63.50	39.37	PHC 40B-1...
48B-1	76.20	48.26	PHC 48B-1...
56B-1	88.90	53.98	PHC 56B-1...
64B-1	101.60	63.50	PHC 64B-1...
72B-1	114.30	72.39	PHC 72B-1...
05B-2	8.00	5.00	PHC 05B-2...
06B-2 <sup>^</sup>	9.53	6.35	PHC 06B-2...
08B-2	12.70	8.51	PHC 08B-2...
10B-2	15.88	10.16	PHC 10B-2...
12B-2	19.05	12.07	PHC 12B-2...
16B-2	25.40	15.88	PHC 16B-2...
20B-2	31.75	19.05	PHC 20B-2...
24B-2	38.10	25.40	PHC 24B-2...
28B-2	44.45	27.94	PHC 28B-2...
32B-2	50.80	29.21	PHC 32B-2...
40B-2	63.50	39.37	PHC 40B-2...
48B-2	76.20	48.26	PHC 48B-2...
56B-2	88.90	53.98	PHC 56B-2...
64B-2	101.60	63.50	PHC 64B-2...
72B-2	114.30	72.39	PHC 72B-2...
05B-3	8.00	5.00	PHC 05B-3...
06B-3 <sup>^</sup>	9.53	6.35	PHC 06B-3...
08B-3	12.70	8.51	PHC 08B-3...
10B-3	15.88	10.16	PHC 10B-3...
12B-3	19.05	12.07	PHC 12B-3...
16B-3	25.40	15.88	PHC 16B-3...
20B-3	31.75	19.05	PHC 20B-3...
24B-3	38.10	25.40	PHC 24B-3...
28B-3	44.45	27.94	PHC 28B-3...
32B-3	50.80	29.21	PHC 32B-3...
40B-3	63.50	39.37	PHC 40B-3...
48B-3	76.20	48.26	PHC 48B-3...
56B-3	88.90	53.98	PHC 56B-3...
64B-3	101.60	63.50	PHC 64B-3...
72B-3	114.30	72.39	PHC 72B-3...

<sup>^</sup> Straight side plates

### SKF India Limited

Mahatma Gandhi Memorial Building,  
 Netaji Subhash Road, Mumbai - 400 002, India  
 Tel. +91-22-6633 7777, Fax +91-22-2281 9074  
 Toll Free: 1800 222 007  
 Email: marketing.sbu@skf.com  
 www.skf.com, www.skfindia.com

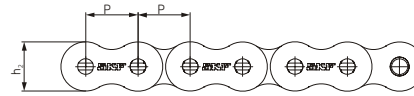
© SKF Group 2011

The contents of this publication are the copyright of the publisher and may not be reproduced (even extracts) unless prior written permission is granted. Every care has been taken to ensure the accuracy of the information contained in this publication but no liability can be accepted for any loss or damage whether direct, indirect or consequential arising out of the use of the information contained herein.

PUB 0000 00000 EN.IN · March 2011

## Roller chains

ANSI



ANSI Chain No.	BS/ISO Chain No.	Pitch P mm	Roller diameter d <sub>1</sub> max mm	Designation
15-1*	03C*	4.76	2.48	PHC 15-1...
25-1*	04C-1*	6.35	3.30	PHC 25-1...
35-1*	06C-1*	9.53	5.08	PHC 35-1...
41-1	085-1	12.70	7.77	PHC 41-1...
40-1	08A-1	12.70	7.95	PHC 40-1...
50-1	10A-1	15.88	10.16	PHC 50-1...
60-1	12A-1	19.05	11.91	PHC 60-1...
80-1	16A-1	25.40	15.88	PHC 80-1...
100-1	20A-1	31.75	19.05	PHC 100-1...
120-1	24A-1	38.10	22.23	PHC 120-1...
140-1	28A-1	44.45	25.40	PHC 140-1...
160-1	32A-1	50.80	28.58	PHC 160-1...
180-1	36A-1	57.15	35.71	PHC 180-1...
200-1	40A-1	63.50	39.68	PHC 200-1...
240-1	48A-1	76.20	47.63	PHC 240-1...
25-2*	04C-2*	6.35	3.30	PHC 25-2...
35-2*	06C-2*	9.53	5.08	PHC 35-2...
41-2	085-2	12.70	7.77	PHC 41-2...
40-2	08A-2	12.70	7.95	PHC 40-2...
50-2	10A-2	15.88	10.16	PHC 50-2...
60-2	12A-2	19.05	11.91	PHC 60-2...
80-2	16A-2	25.40	15.88	PHC 80-2...
100-2	20A-2	31.75	19.05	PHC 100-2...
120-2	24A-2	38.10	22.23	PHC 120-2...
140-2	28A-2	44.45	25.40	PHC 140-2...
160-2	32A-2	50.80	28.58	PHC 160-2...
180-2	36A-2	57.15	35.71	PHC 180-2...
200-2	40A-2	63.50	39.68	PHC 200-2...
240-2	48A-2	76.20	47.63	PHC 240-2...
25-3*	04C-3*	6.35	3.30	PHC 25-3...
35-3*	06C-3*	9.53	5.08	PHC 35-3...
40-3	08A-3	12.70	7.95	PHC 40-3...
50-3	10A-3	15.88	10.16	PHC 50-3...
60-3	12A-3	19.05	11.91	PHC 60-3...
80-3	16A-3	25.40	15.88	PHC 80-3...
100-3	20A-3	31.75	19.05	PHC 100-3...
120-3	24A-3	38.10	22.23	PHC 120-3...
140-3	28A-3	44.45	25.40	PHC 140-3...
160-3	32A-3	50.80	28.58	PHC 160-3...
180-3	36A-3	57.15	35.71	PHC 180-3...
200-3	40A-3	63.50	39.68	PHC 200-3...
240-3	48A-3	76.20	47.63	PHC 240-3...

\* Bushing chain: d<sub>1</sub> indicates external diameter of bushing

This brochure was presented by:

